

Dino-Lite

Digital Microscope



Redefine the microscope



NEW PRODUCTS

2017

USB 3.0

Our USB 3.0 microscopes can achieve up to 45 FPS at full, uncompressed 1280x960 resolution.

OTHER FEATURES INCLUDE:

- Improved color accuracy
- 2592x1944 Maximum Resolution
- Removable USB 3.0 Cable
- Standard, Long, and Far working distance models available

MODELS

AM73115MZT (\$1099)

- Standard Working Distance
- 10-230x Magnification

AM73115MTF (\$1129)

- Far Working Distance
- 1-70x Magnification

AM73115MZTL (\$1169)

- Long Working Distance
- 5-140x Magnification



Far Working Distance

Our far working distance models are perfect for those needing additional space underneath the microscope for performing intricate work. The built in variable telescopic lens can give you up to 70x magnification at 4" away from the subject.

WORKING DISTANCES FOR "TF" MODELS

Magnification	1x	5x	10x	20x	40x	50x	70x
WD mm	4750	895	480	260	153	135	110
FOV mm	389 x 289	77 x 54	37 x 28	19 x 14	9.5 x 7	7.5 x 5.5	5.2 x 4
WD Inch	192 (16')	36	19	10.2	6	5.2	4.2
FOV Inch	15.3 x 11	5 x 4	1.5 x 1	.75 x .5	.3 x .2	.3 x .2	.2 x .1

MODELS

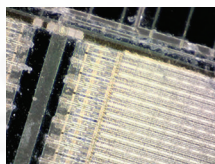
AM4115TF (\$649)

AM73115MTF (\$1129)



Coaxial Lighting

Built In coaxial lighting can reveal hidden details not visible otherwise.



Normal Lighting



Coaxial Lighting

MODELS

AM7515MT2A (\$1069)

- 120-220x Magnification

AM7515MT4A (\$1129)

- 415-470x Magnification

AM7515MT8A (\$1249)

- 700-900x Magnification

Eyepiece Camera

The AM7025X is our first Edge Series eyepiece camera. The AM7025X features enhanced color accuracy, 2592x1944 maximum resolution, and better clarity overall.



MODEL

AM7025X (\$649)

Dino-Lite
Digital Microscope

Redefine the microscope

What is the Dino-Lite?

The Dino-Lite digital microscope is an amazing and easy to use portable handheld device for inspection, testing, and documentation. As the live image is displayed on a monitor, users are able to inspect and analyze the image using software while sitting in a comfortable upright position.

All Models Include

2-YEAR WARRANTY • FREE TECH SUPPORT

Edge Series

Built to professional standards and feature high quality optical resolution, field of view enhancement, and more.



ADVANCED FEATURES:

+ INTERCHANGEABLE CAP DESIGN

Most Edge series models have a removable cap design and include a set of alternate caps. Each cap has a different lighting and focus effect for increased versatility.

+ LONG WORKING DISTANCE (LWD)

Microscopes with LWD allow for extra space between the microscope and the specimen. They have a lower maximum magnification compared to standard models, but will have a further working distance when viewing the same magnification.

+ AUTOMATIC MAGNIFICATION READING

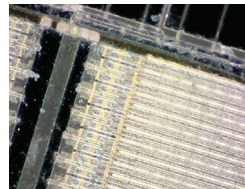
AMR automatically communicates the current magnification to the DinoCapture 2.0 software for more efficient and accurate measurements.

+ FLEXIBLE LED CONTROL

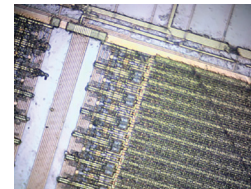
With controllable LED quadrants, switching capability, and a 6-level adjustable luminance, FLC provides greater control of the lighting.

+ COAXIAL LIGHTING

Some models include a coaxial lighting mode that can reveal hidden details not visible otherwise.



Normal Lighting



Axial Lighting

+ EXTENDED DEPTH OF FIELD

EDOF automatically captures and combines multiple images at different focal points to produce one clear image.



Normal Image



EDOF

Dino-Eye Camera

Dino-Eye cameras are designed to convert your existing traditional, stereo, or compound microscope into a digital microscope. Simply insert the camera in the eyepiece, or C-mount, and connect via USB. Dino-Eye cameras are available in a number of different sizes to fit your microscope.



Dino-Lite Direct (TV)

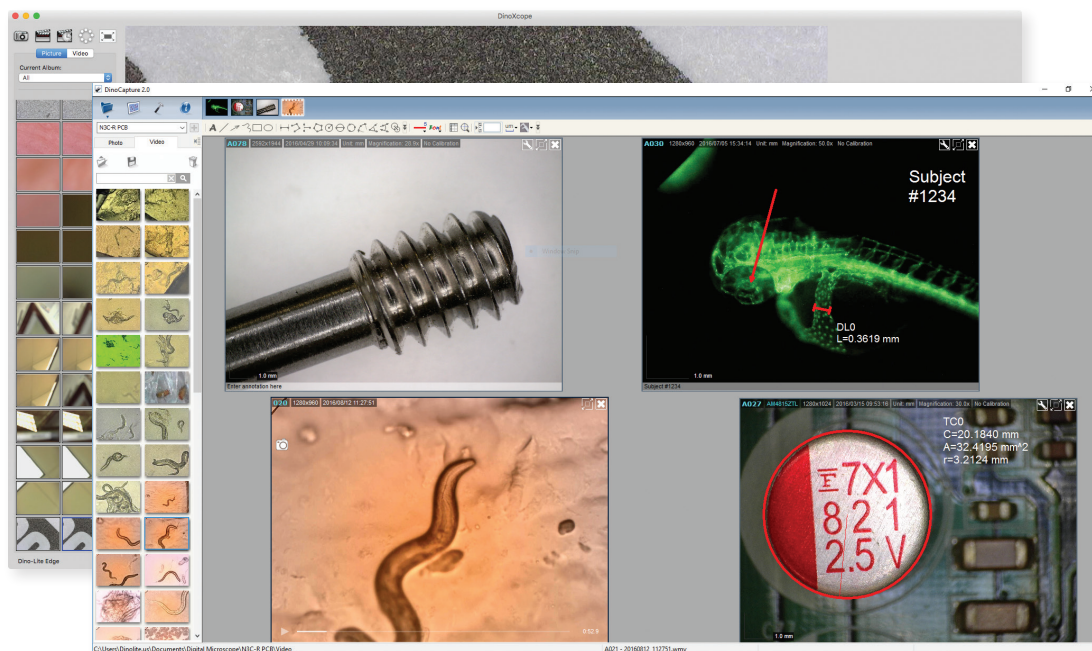
Designed to connect directly to a TV display, Dino-Lite connect models are available with RCA, VGA, or HD/DVI connection. Plug in your display and power on, no software needed. Great for applications that only require viewing, or when a computer is not available.



Key Features

Capture Images & Video

Easily save images, videos, and time-lapse videos using the included license-free software.



Preview Window Tools

- Snapshot
- Video Recorder
- Time-Lapse Video
- EDR-Extended Dynamic Range*
- EDOF-Extended Depth of Field*
- Microtouch*
- White Balance*
- Auto Exposure Setting
- LED Control*
- Flexible LED Control*
- Camera Adjustment Setting
- Maximize Window
- Close Window

*Feature can only be found on specific Dino-Lite models.

Adjust Image Settings

Use the software settings panel to adjust lighting, colors, brightness, contrast, and other settings.

Connectivity Types

There are various ways to connect different Dino-Lite models, such as USB 2.0, TV (RCA), VGA, and HD/DVI connections.

Magnification Ranges

Simple to use with powerful results, our standard magnification ranges from 10x - 200x, with models up to 900x.

High Resolution

The Dino-Lite 5MP Edge Series are specially designed for industrial applications where users can benefit from the higher resolution for detailed inspections, with a maximum resolution of 2592 x 1944.

Two Housing Types

The standard ABS plastic body is very reliable and strong. The metal body consists of aerospace-grade machine tooled aluminum, which offers enhanced protection.

Lighting Control

Sometimes light can be a damaging factor. Many Dino-Lite models have a built-in adjustable polarizer for reducing glare. Diffuser caps, lighting accessories, and exposure adjustments also help to achieve optimal results.

Measurement & Annotation

Most models have measurement capability, including lines, circles, angles, and more. The snap feature lets you snap to any edge, allowing you to take measurements more easily. You can also add annotations for easy organization of files.

Special Lighting - IR/UV/Fluorescence

Along with white LED lighting, some Dino-Lite models also have special lighting options, with multiple LED wavelengths available.

Series	Excitation Wavelength	Emission Filter
CFVW	400nm	430nm
GFBW	480nm	510nm
GRFBY	480/575	510/610
YFGW	525nm	570nm
RFYW	575nm	610nm
DFRW	620nm	650nm



Mobile Solutions

WF-10 & DinoConnect App

The WF-10 WiFi adapter is designed to wirelessly stream the live image from a compatible Dino-Lite to mobile devices such as iPhones, iPads, Android phones, and Android tablets. Using the included DinoConnect app, you can even take measurements on the go.

Chromebooks

Some Dino-Lite models may be used with Google Chromebooks by using the default camera application.



Android USB Mobile Scope

Connect a compatible Dino-Lite model by USB to a supported Android device and use the CameraFi app to view a live image and capture photos and video.

Accessories

RK-10A Stand & Add-ons

The RK-10A universal stand is a sturdy tabletop platform featuring precise adjustments and quick release functions. The included arm can be replaced or extended with various add-ons for maximizing flexibility.

- | | | |
|-------------------------------------------------|-------------------------------------------------|------------------------------------------------------------|
| 1. RK-10A - \$269
Universal Stand | 3. RK-10-VX - \$39
Vertical Extension | 5. MSA2T - \$30
Add-on Height Extender Accessory |
| 2. RK-10-FX - \$39
Flexible Extension | 4. RK-10-PX - \$99
XY-Positioning Arm | |



More Stands



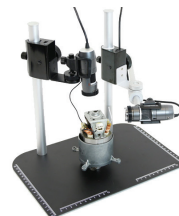
MS09B - \$34
Ultra Portable



MS35B - \$99
Stable Desktop Stand



MS36B - \$169
Stable Desktop Stand with Horizontal Arm



MS37B-2X - \$299
Dual Stand with One Horizontal Arm



MS34B-R3 - \$99
Compact Dual Fine Adjustment Stand



MS33W - \$49
Articulating Desktop Stand



RK-02 - \$129
Sturdy Articulating Desk Clamp



MS52BA2 - \$269
Articulating Elbow Stand

Other Accessories



N3C-R - \$119
Ring Light for Edge Series



N3C-A - \$109
Coaxial Light Cap for Edge Series



BL-CDW - \$369
Bright Field & Dark Field Backlight Stage



BL-ZW1 - \$299
Polarized Backlight

Additional Accessories



MS23B - \$39
Articulating Clamp Stand



MS35B-P4 - \$169
Stable Desktop Stand with
Dual Scope Mount



MS37B-26 - \$349
Dual Horizontal Arm Stand



MS45BX-D2 - \$599
Dual Specimen
Comparison Stand



MS09B-S - \$39
Stainless Steel Ultra
Portable Stand



MS62W1 - \$149
Wheel Rack Stand



MS62P - \$99
Rolling Rack



MS34B-R2 - \$69
Compact Fine
Adjustment Stand



MSHD-M1 - \$69
Metal Holster



MSAK842 - \$20
Multifunctional Stage for
Diamonds & Gemstones



MSAK843 - \$69
Multifunctional
Slotted Stage



MSAK845 - \$199
Object Holder Attachment
for MS35B



MS15X-S2 - \$199
XY Rotation Stage for
RK-10A/MS35B/MS36B



MS25X - \$199
XY Inspection Stand



MS17TSW-F1 - \$99
Foot Pedal Controller



MSKM-01 - \$399
Knob Motor



MSAA213P - \$49
Arched Viewing Adapter



MS35B-A810 - \$139
Vertical Mount With Flex-Arm



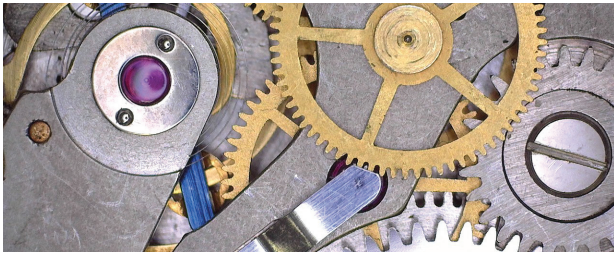
MSAK813 - \$299
Advanced Supplemental
Dual Articulating Spot Light



MS36WA2 - \$249
Horizontal Mount with
Industrial Base

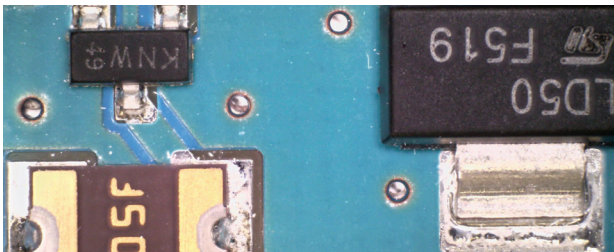
Applications

Industrial



- Quality Control
- Automotive
- Textile & Composite
- Nonwovens
- Testing
- Manufacturing
- Machine Vision

PCB & IC



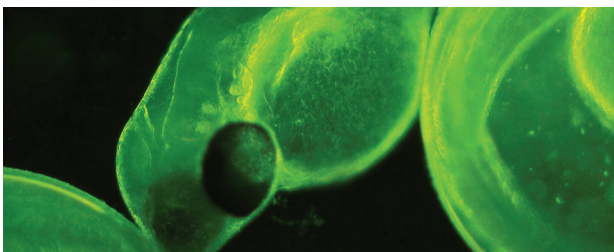
- Component Inspection
- Soldering
- Quality Control
- Failure Analysis
- BGA Inspection
- Counterfeit PCB/IC
- Silicon Wafer

Medical



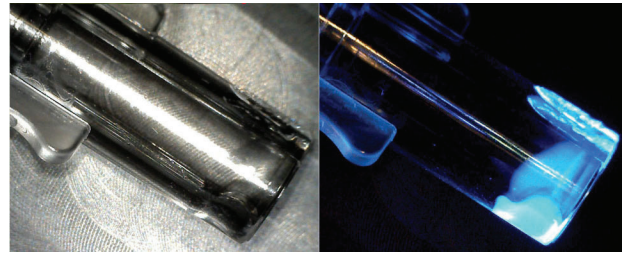
- Veterinary
- General Medical
- Dermatology
- Eye / Ear / Nose / Throat

Laboratory



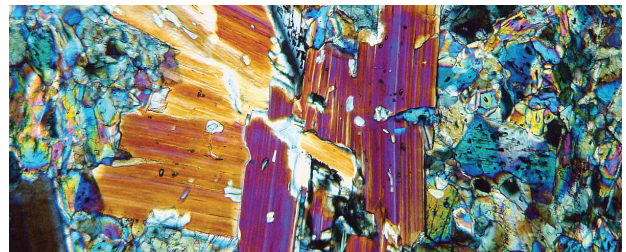
- Life Science
- Genetics
- Zebrafish
- Slides

Fluorescence/UV



- Zebrafish
- Genetics
- GFP/RFP
- Counterfeit Detection
- Forensics
- Custom Wavelengths

Science



- Geology
- Archaeology
- Paleontology
- Plants
- Insects
- Mineralogy

Education/Academics



- Teaching
- Research Lab
- Field Research

Jewelry/Collectibles



- Jewelry
- Coin & Numismatic
- Antiques
- Hobby

Product List

Dino-Lite Digital Microscope

Product	MSRP	Resolution	Magnification	Interface	LEDs	Measurement & Calibration	Polarizer	Long Working Distance	Metal Housing	FLC	Special Features*
Dino-Lite Basic											
AM2111	\$99	640x480	10x-50x, 230x	USB 2.0	4-White						
Dino-Lite Premier											
AM3111T	\$199	640x480	10x-50x, 230x	USB 2.0	8-White						
AM3113T	\$289	640x480	10x-50x, 230x	USB 2.0	8-White	■					
AM4111T	\$329	1280x1024	10x-50x, 220x	USB 2.0	8-White						
AM4113T	\$399	1280x1024	10x-50x, 220x	USB 2.0	8-White	■					
AM4113ZT	\$499	1280x1024	10x-50x, 220x	USB 2.0	8-White	■	■				
AM4113ZTL	\$549	1280x1024	10x-90x	USB 2.0	8-White	■	■	■			
AM4113ZT4	\$529	1280x1024	400x-470x	USB 2.0	8-White	■	■				
Dino-Lite Edge (USB)											
AM4115ZT	\$629	1280x1024	10x-220x	USB 2.0	8-White	■	■				
AM4515ZT	\$769	1280x1024	15x-220x	USB 2.0	8-White	■	■				AMR
AM4515ZTL	\$799	1280x1024	5x-140x	USB 2.0	8-White	■	■	■			AMR
AM4515ZT4	\$749	1280x1024	400x-475x	USB 2.0	8-White	■	■				AMR
AM4515T8	\$849	1280x1024	700x-900x	USB 2.0	8-White	■					AMR
AM4815ZT	\$869	1280x1024	15x-220x	USB 2.0	8-White	■	■				EDOF
AM4815ZTL	\$899	1280x1024	15x-140x	USB 2.0	8-White	■	■	■			EDOF
AM7115MZT	\$999	2592x1944	10x-230x	USB 2.0	8-White	■	■		■	■	
AM7115MZTL	\$1069	2592x1944	10x-140x	USB 2.0	8-White	■	■	■	■	■	
AM7515MT4A	\$1129	2592x1944	400x-470x	USB 2.0	8-White	■	■		■	■	COAX+AMR
AM7515MT8A	\$1249	2592x1944	700x-900x	USB 2.0	8-White	■			■	■	COAX+AMR
AM7915MZT	\$1269	2592x1944	20x-220x	USB 2.0	8-White	■	■		■	■	AMR+EDOF
AM7915MZTL	\$1299	2592x1944	5x-140x	USB 2.0	8-White	■	■	■	■	■	AMR+EDOF
Dino-Lite Edge (TV)											
AM5212NZT	\$529	960x480	20x-220x	TV/RCA	8-White		■				
AM5212MNZ	\$599	960x480	20x-220x	TV/RCA	8-White		■		■		
AM5212MNZL	\$649	960x480	5x-140x	TV/RCA	8-White		■	■	■		
AM5216ZT	\$669	1280x720	20x-220x	VGA	8-White		■				
AM5216ZTL	\$699	1280x720	5x-140x	VGA	8-White		■	■			

*AMR and EDOF features are available only on Windows

Dino-Eye Eyepiece Camera

Product	MSRP	Resolution	Base Magnification	Interface	Measurement & Calibration	Aperture Diameter
AM4023	\$289	1280x1024	20x	USB 2.0	■	23mm, 30mm, C-Mount
AM4023X	\$299	1280x1024	20x	USB 2.0	■	23mm, 30mm, 30.5mm
AM4023XC	\$329	1280x1024	20x	USB 2.0	■	23mm, 30mm, 30.5mm, C-Mount
AM4023CT	\$329	1280x1024	1x	USB 2.0	■	C-Mount
AM4023U	\$289	1280x1024	1x	USB 2.0	■	Over ocular up to 36mm
AM7023	\$569	2592x1944	20x	USB 2.0	■	23mm
AM7023B	\$589	2592x1944	20x	USB 2.0	■	30mm, 30.5mm
AM7023CT	\$599	2592x1944	1x	USB 2.0	■	C-Mount
AM422XN	\$299	640x480	20x	TV/RCA		23mm, 30mm, 30.5mm

Accessories

Product	MSRP	Description
RK-10A	\$269	Precision tabletop stand with quick release & fine adjustment
RK-10-FX	\$39	Flexible arm attachment for RK-10A
RK-10-VX	\$39	Vertical extension attachment for RK-10A
RK-10-PX	\$99	XY positioning arm accessory for RK-10A
RK-02	\$129	Sturdy gooseneck stand with C-clamp
MS35B	\$99	Stable tabletop stand
MS36B	\$169	Stable tabletop stand with horizontal boom arm
MS37B-2X	\$299	Dual stand with one horizontal boom arm

Product	MSRP	Description
MS09B	\$34	Ultra portable lightweight stand
MS34B-R2	\$69	Ultra portable precision stand
MS34B-R3	\$99	Ultra portable dual fine adjustment stand
KM-01	\$399	Motor control for magnification knob
MS15X-S2	\$199	XY and rotation stage for RK-10A/MS35B/MS36B
BL-ZW1	\$299	Polarized backlight
BL-CDW	\$369	Backlight stage with bright field & dark field illumination
WF-10	\$289	Dino-Lite Wi-Fi Adapter for iOS & Android devices

Additional products and technical specification sheets available

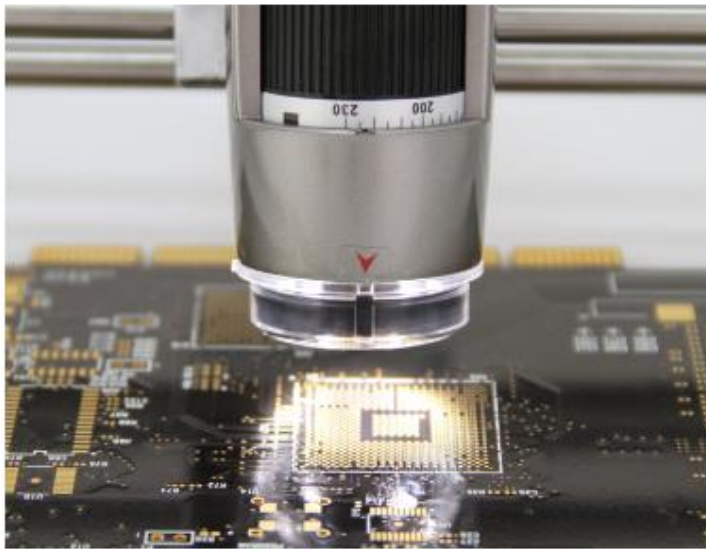
Helpful links for Dino-Lite models' working distance, field of view and depth of field data at different magnification.

<https://dinolite.us/features/wd>

Working Distance

Print

Share



Description

The Working Distance (WD) is the distance between the end of the Dino-Lite handheld microscope camera and object being viewed. There are Dino-Lite models from zero working distance (touching or close to touching at highest magnifications) and enhanced working distance models for those that require a little space between the microscope and subject and magnification up to 140x.

Working Distance

- Gallery

Related Links

- Field of View
- Variable Magnification
- Depth of Field

Gallery

