

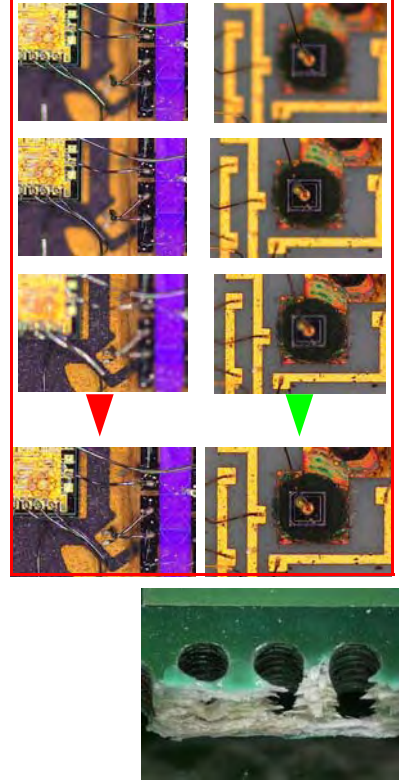
**YSC Technologies** offers High Resolution Digital Video Microscope and Measurement Systems for SMT, Semiconductor, Medical Device, and also BGA, micro BGA, CSP, Flip Chip applications (help you see what X Ray cannot) with XY or XYZ Measurement tools, Color CCD or UXGA Cameras, image capturing and processing software, and various standard and custom accessories, serving QA, FA and Production.



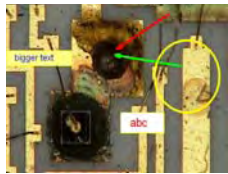
### 3D PowerScope (50X to 300X) or (25X to 150X)

3D PowerScope High Resolution Video Inspection System with special 45 degree oblique angle rotational viewing for ultimate 3D experience. The system can be configured with various cameras, image capture & processing, and video measurement software. 38X to 225X option is also available.

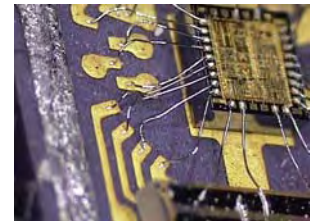
### Multi Focus Feature



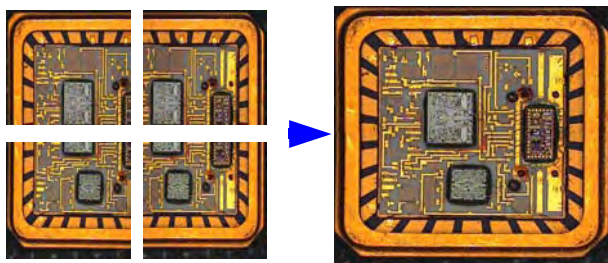
### Video Measurement



- Distance
- Circle
- Angle
- Line Width
- Area
- Auto Calibration
- Live Measurement
- Video Recording
- Jpg. Image Capture
- Image Database
- Grid
- Height Measurement



**Tiling Feature** Combine different images into one.



**Please Contact:**

# YSC Technologies

44386 South Grimmer Blvd., Fremont, CA 94538 USA

[www.ysctech.com](http://www.ysctech.com)  
[info@ysctech.com](mailto:info@ysctech.com)

TEL: 510.226.0889

FAX: 510.226.6789

## 3D PowerScope Configuration

ITEM:	PART NO.	DESCRIPTION	PRICE
<b>Typical package includes Lens, Camera, Software and Stand.</b>			
	3D-5030-C	Discount Package Value including qty. 1 each 3D-5030, HT20A, SP-LITE, YSC IPU, KB <b>[SAVE \$610]</b>	
	3D-5030-CL	Discount Package Value including qty. 1 each 3D-5030, HT20A, SP-LITE, YSC IPU, LS <b>[SAVE \$630]</b>	
	3D-5030-M1	Discount Package Value including qty. 1 each 3D-5030, M1, KB <b>[SAVE \$542]</b>	
	3D-5030-M1L	Discount Package Value including qty. 1 each 3D-5030, M1, LS <b>[SAVE \$562]</b>	
	3D-5030-M2	Discount Package Value including qty. 1 each 3D-5030, M2, KB <b>[SAVE \$512]</b>	
	3D-5030-M2L	Discount Package Value including qty. 1 each 3D-5030, M2, LS <b>[SAVE \$532]</b>	
	3D-5030-M3	Discount Package Value including qty. 1 each 3D-5030, M3, KB <b>[SAVE \$162]</b>	
	3D-5030-M3L	Discount Package Value including qty. 1 each 3D-5030, M3, LS <b>[SAVE \$182]</b>	
<b>LENS OPTIONS and OTHER VIEWING ADAPTERS</b>			
	3D-5030	3D PowerZoom Lens (50x - 300x Video Magnification with 6 to 1mm Horizontal Field of View) with Detent Click Stops and Built-in High Intensity LED Lighting, including Rotary Motor Controller for Light Intensity, Rotation Speed, Stop/Run Adjustments, Straight 0° Viewing Lens with 90mm Working Distance. 45 Degree Oblique Viewing Adapter with 25mm Working Distance.	
	AD-25	25 Degree Oblique Viewing Adapter with 36mm Working Distance for 3D-5030	
	AD-30	30 Degree Oblique Viewing Adapter with 36mm Working Distance for 3D-5030	
	AD-35	35 Degree Oblique Viewing Adapter with 36mm Working Distance for 3D-5030	
	AD-55	55 Degree Oblique Viewing Adapter with 36mm Working Distance for 3D-5030	
<b>CCD CAMERA, FRAME GRABBER CARD AND VIDEO MEASUREMENT SOFTWARE OPTIONS:</b>			
	HT20A	Super Sharp Hitachi High Resolution Color CCD Camera 811(H) x 508(V) Total Pixels. Real Time Full Motion Video 30fps. S-video and BNC outputs.	
	SP-LITE	Video Frame Grabber Card for Full Motion 640x480 30fps Video Display Card (BNC & S-video inputs) - PCI. Store and edit images in jpg, tif or bmp formats. <b>[CUSTOMER TO SUPPLY THEIR OWN COMPUTER WITH FULL PCI SLOT]</b>	

	YSC IPU	YSC Image Pro Ultra Software can turn your ordinary video microscope into a powerful digital/video image processing and measurement tool. The Multi-Focus feature will solve your depth of field problem of your conventional optics by combining different layer images into one to create an image with exceptional depth of field and clarity. The Tiling feature will solve your narrow field of view problem of your high power objectives by "Tiling" several images with narrow field of view into a final image with combined larger field of view. Measurement tools for point-to-point, line width, circle diameter and angle are standard. Empower your video microscope with the power to see and communicate. Motion Video Recording Feature. <b>[THIS SOFTWARE MUST WORK WITH SP-LITE video frame grabber card]</b>	
<b>MEGAPIXEL CAMERA AND VIDEO MEASUREMENT SOFTWARE OPTIONS:</b>			
	M1	1.4 Megapixel, 1392x1040, USB 2.0 Camera (1/2" CCD Sensor) 15 fps	
	M2	2.0 Megapixel, 1616x1216, USB 2.0 Camera (1/1.8" CCD Sensor) 12 fps	
	M3	3.3 Megapixel, 2080x1536, USB 2.0 Camera (1/1.8" CCD Sensor) 5 fps	
<p>All MegaPixel cameras include ANALYZE software, allowing complete camera control and advanced image acquisition and analysis. Features include: *Real time video preview *Measurement and annotation *Archiving with search for date, author, description *Fluorescent image composition *Single capture and time lapse *Image stitching *Automatic/manual exposure and white balance *Hue, saturation, gain, contrast, brightness and gamma controls *Advanced image processing *Customizable interface for specific applications *Thumbnail worksheet *Drag and drop measurement data to Excel for analysis *Save and restore camera settings *Context sensitive help for all functions *Optional focus enhancement</p> <p>System Requirements: Windows 2000 (Service Pack 3), or XP (Service Pack 1), 600 Mhz or higher Pentium compatible computer, Memory: 256 MB minimum, 512 MB recommended, USB 2.0 Port  <b>[CUSTOMER TO SUPPLY THEIR OWN COMPUTER]</b></p>			
	MFE	Multi-Focus Enhancement Option for ANALYZE Software	
	VM1000	LIVE Video Measurement Software for CM1,CM3,CM5,M1,M2,M3	
<p><a href="#">FAQ: For real time viewing, HT20A has a much quicker refresh rate for full motion video viewing at 30 fps. M1,M2 and M3 are ideal of taking megapixel images.</a>  <a href="#">FAQ: Video measurement accuracy is dependent on field of view and screen pixels. When using HT20A, estimated accuracy is horizontal field of view (HFOV) divided by 500 horizontal pixels. When using M1,M2,M3, estimated accuracy is horizontal field of view (HFOV) divided by 1000 horizontal pixels. [For example, when using M2 with 1mm HFOV, accuracy is 0.001mm (1mm/1000)]</a></p>			
<b>MEASUREMENT OPTIONS:</b>			
	SMC-814	Stage Micrometer for Calibration (Inch: 1" to 0.1" to 0.01" to 0.001" and mm: 25mm to 1mm to 0.1mm to 0.02mm)	
	NIST	NIST certificate for stage micrometer	
<b>STAND AND STAGE OPTIONS:</b>			
	LS	Large base stand (20"W x 23"D) with adjustable horizontal arm (19") and vertical pole (15") can easily handle different board sizes from small to large. Including Focus Block with Fine and Coarse Adjustments.	

	BS	Basic stand (11"Wx13"D) with vertical pole (16"x20mm). Including Focus Block with Fine and Coarse Adjustments.	
	KB	Basic stand (15"Wx13"D) with vertical pole (12"x20mm). Including Focus Block with Fine and Coarse Adjustments.	
	XY-1515	Large 15.5"X15.5" roller bearing stage with 14"x11" X-Y travel. Black Anodized with X-Y lock down screws.	
	XY-129	Large 12"x9" roller bearing stage with 8"x4" X-Y travel. Black Anodized with X-Y lock down screws.	
	XY-564	Graduated Mechanical stage with 0.1mm graduations and coaxial controls for precise movement of mounted specimens. Features a 116x137mm work surface with 50x75mm X-Y travel.	
<b>COMPUTER AND VIDEO OPTIONS</b>			
	LCD-14	SONY 14" Professional LCD Monitor with S-Video and BNC Inputs (This monitor does NOT work with Megapixel Cameras or Computer)	
	Dell Xp Home	Current computer specs sample: Dell Core2 Duo (3GHz), 2GB SDRAM, 160GB HD, 16X (DVD+/-RW), USB Ports, 17" Ultra-Sharp Flat Panel Display Monitor, Window Xp Home Edition.	
	Dell Xp Pro	Current computer specs sample: Dell Core2 Duo (3GHz), 2GB SDRAM, 160GB HD, 16X (DVD+/-RW), USB Ports, 17" Ultra-Sharp Flat Panel Display Monitor, Window Xp Pro Edition.	
<b>XYZ MEASUREMNT STAGE OPTIONS</b>			
	Z-05	Z-Height Measurement Digimatic Meter Option 0.5" range and 1 micron resolution.	
	5050MJ	Reflected light measuring stage: 150mm x 150mm top plate, with 50mm x 50mm x-y travel with LCD display. 1 micron accuracy.	
	5050MJ-BL	Transmitted light (back lighting) measuring stage: 150mm x 150mm top plate, with 50mm x 50mm x-y travel with LCD display. 1 micron accuracy.	
<b>LIGHTING OPTIONS:</b>			
	DUAL-LS	Dual Arm Fiber Illumination System	
	BL44-LS	4"X4" active area back light plate with 150W halogen light source	
	BL22-LS	2"X2" active area back light plate with 150W halogen light source	

Specification subject to improvement changes without notice.