

YSC FreeScope 1X to 167X

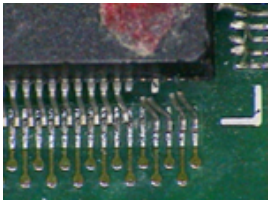


YSC FreeScope with various models offers high flexibility zoom lens with great depth of focus which is ideal for inspection, documentation and measurement of electronics components, SMT, semiconductor and medical devices. The system can be configured with large 14" LCD monitor, digital video camcorder, Sony Memory Stick recorder, video capture card, video printer, or computer system with measurement software

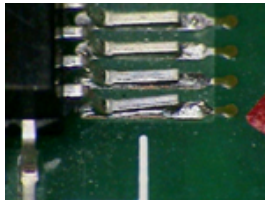
and Image Tiling. Flexible Universal Stand

and Articulating Arm Stand are available for your small to larger components. The viewing angle can be easily adjusted from zero degree top down viewing, to 45 degree for oblique angle 3D viewing and also any other viewing 5 to 85 degree angles

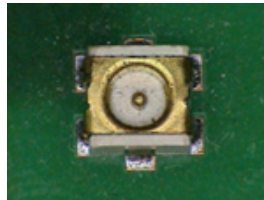
YSC FreeScope Actual Images



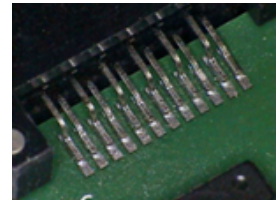
Connector



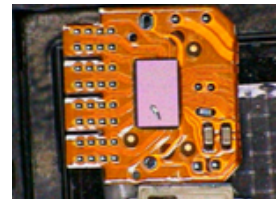
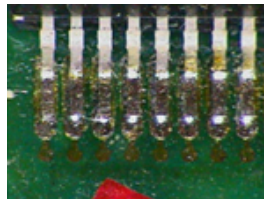
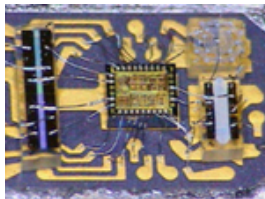
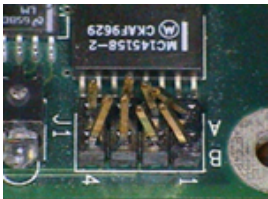
Cold Solder



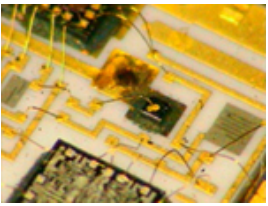
Component



Connector

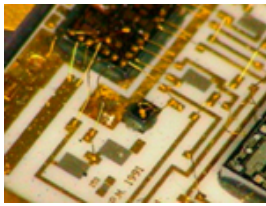


Crushed Pins



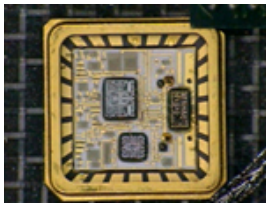
Gold Wire

Crushed Wire



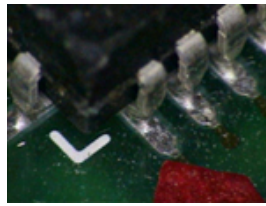
Hybrid

Excess Flux



Hybrid Package

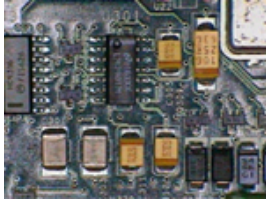
Flip Chip



J Lead Crack



Medical Device



Missing Components



Wide Angle View



Wire Component

YSC FreeScope Hardware



Articulating Arm



XY Sliding Stage Option



articulating arm



Oblique Angle Viewing



Top Down Viewing

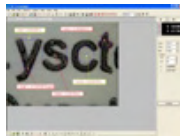


FreeScope with Universal Stand

Video Accessories



ImagePower System for
Measurement, Multi-Focus and
Tiling



Video Measurement Software



Flat Panel Computer Monitor



Flat Panel LCD Monitor



Video Capture and Display Card



Portable Sony Memory Stick and
Video Recorder



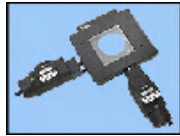
Video Printer



Various Stand Options



XY Stage for Double Sided SMT
Board



Manual or Motorized XYZ
Measurement Stages



Double Sided SMT Board XY Stage



Lighting Accessories

YSC FreeScope Specifications

	FS-2LM	FS-4LM	FS-8LM
Video Magnification with 14" Monitor at 6" Working Distance Approx.	3x - 30x	5x - 50x	10x - 100x
Horizontal Field of View at 6" Working Distance Approx.	100 to 10mm	55 to 5.5mm	27 to 2.7mm
Possible Video Magnification Range with 14-Inch Monitor Approx.	1x - 43X	2x - 81x	4x - 167x
Possible Horizontal Field of View with Various Working Distance Approx.	251 to 6.6mm	145 to 3.5mm	65 to 1.7mm
Possible Working Distance Range	4 to 15.5 inch		
Ultra Sharp Color CCD Sensor	410,000 Pixels		
Camera Controls	Gain & White Balance		

Lens	10x Parfocal Zoom Lens (Manual)		
Lens Adjustments	Iris, Focus and Zoom		
LCD Color Monitor	14" SONY Professional LCD Video Monitor		
Video Magnification with 14" Monitor at 4" Working Distance Approx.	4.4x - 43.1x	8.1x - 81.3x	17.2x - 167.3x
Horizontal Field of View at 4" Working Distance Approx.	64 to 6.6mm	35 to 3.5mm	16.5 to 1.7mm
Video Magnification with 14" Monitor at 12" Working Distance Approx.	1.4x - 14.2x	2.6x - 24.7x	5.6x - 54.7x
Horizontal Field of View at 12" Working Distance Approx.	197 to 20mm	111 to 11.5mm	51 to 5.2mm
Video Magnification with 14" Monitor at 15.5" Working Distance Approx.	1.1x - 10.9x	2x - 19x	4.4x - 40.6x
Horizontal Field of View at 15.5" Working Distance Approx.	251 to 26mm	145 to 15mm	65 to 7mm
Video Outputs	Composite Video and S-Video Outputs		
Viewing Angles	Top down straight viewing, 45 degree oblique viewing, or 0o to 90o		
Lighting	High Intensity Adjustable LED		
Available Lighting Option	Fluorescent		
Stand Options	Universal or Articulating Arm Stand		
Video Accessories Available:	Video Frame Grabber Card		
	Video Measurement Software		
	Video Measurement Approx. Accuracy is Field of View Divided by 500		
	SONY Video Walkman with 7" LCD Screen		
	Example: With 5mm FOV, accuracy is 0.01mm		