



YSC FreeScope Manual





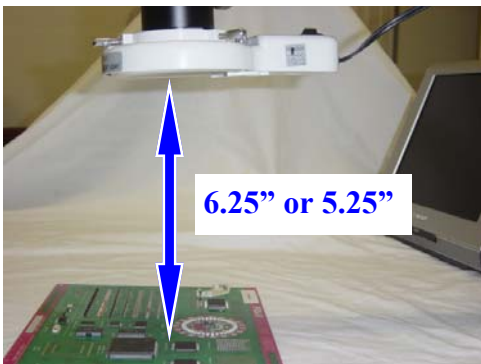
Connect to S-Video



Assemble the Universal Stand as Shown



Attach the ring fluorescent light if desired



Working Distance is about 6.25" for model with LED lighting. You can also bring the working distance to 5.25" if you want higher light intensity.



Use the knob to adjust viewing angle (Top down shown)



Oblique Angle Viewing Shown



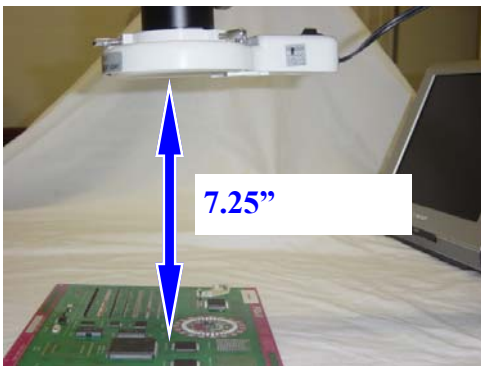
Connect to S-Video



Assemble the Universal Stand as Shown



Attach the ring fluorescent light if desired



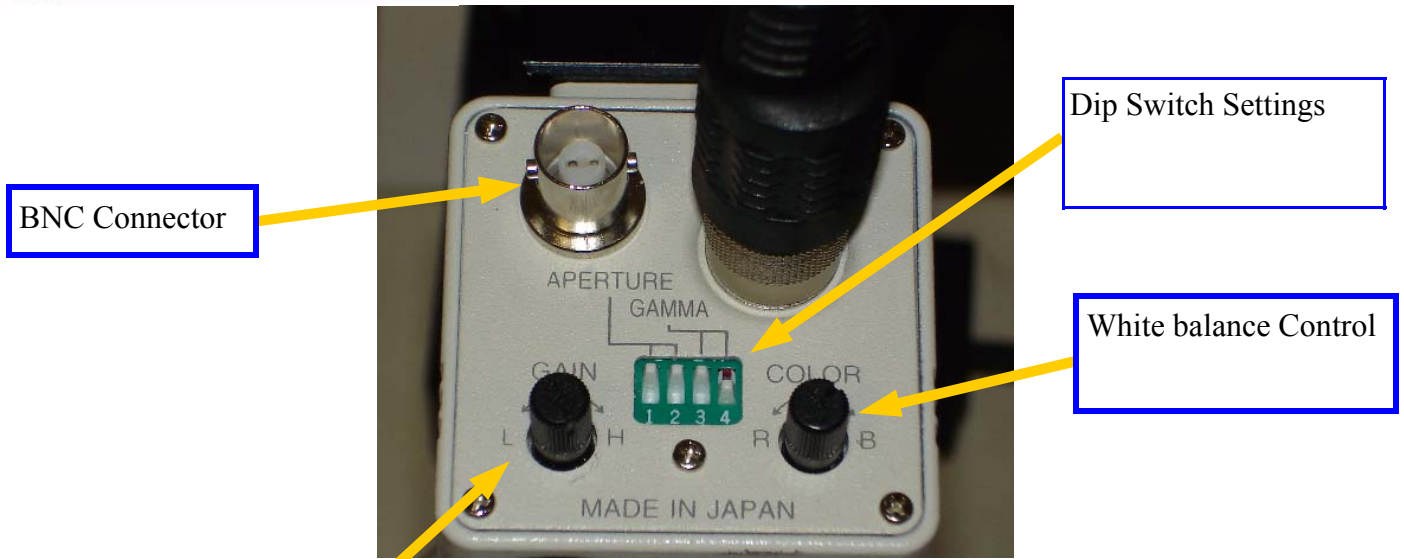
Working Distance is about 7.25" for model with Fluorescent lighting. You can also bring the working distance to 6.25" if you want higher light intensity.



Use the knob to adjust viewing angle (Top down shown)



Oblique Angle Viewing Shown



BNC Connector

Dip Switch Settings

White balance Control

Gain Level Control.
If Ambient lighting is sufficient, then can increase the gain and remove the fluorescnet lighting.

For best image quality, please adjust Gain Level and Iris in combination depending on your actual samples.

For Parfocal setting:
Zoom in maximum magnification "T".
Focus by adjust the Focusing Control. You may "tighten" the set screw if you want more "resistance" on the movement.
The lens should stay in focus when you zoom in and out.



Iris Control for changing depth of field.

Zoom Control for Low and High Magnification.

Focusing Control

If you have HD 1080p model, please follow below connections.

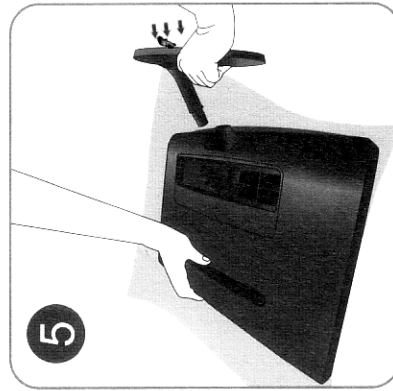
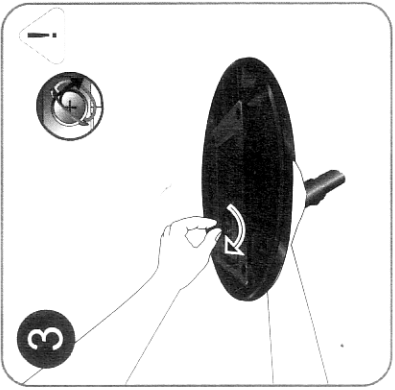
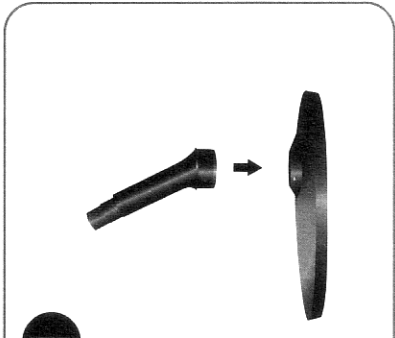


Monitor with HDMI input



Video Device like:
VIC-USB, USB Capture Device
YSC IPU, Video Measurement Software





BN68-02482A-00

If you have HD 1080p model, please follow below connections.

